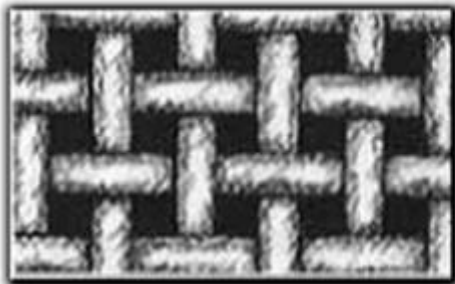


## MS<sup>®</sup> NMO Mesh filter bag



### Introduction

MS<sup>®</sup> Monofilament Mesh Filter Bag (NMO) is constructed using a woven fabric. Each thread is a single filament, providing excellent strength with no fiber migration. The fabric is designed with evenly spaced holes. The monofilament yarn used in the fabric is extremely abrasion resistant, resistant to a broad range of chemicals, unaffected by metal fatigue or corrosion, has no loose fibers and boasts high tensile strength.



*Monofilament Mesh is a woven fabric where each thread is a single filament, boasting excellent strength with no fiber migration.*

### Feature

- Monofilament mesh structure
- Fixed aperture
- Good stretch-proof performance
- Stainless steel or self-sealing plastic collar
- Strengthened outer lining hem
- Suitable to intercept rigid impurity and high viscosity fluid
- Easy to clean

### Application

- Raw water filtration in Water treatment industry
- Prefiltration in Metallurgy industry
- Degreasing in automotive industry • Coolant filtration in Paint industry
- Cutting fluid filtration in machine industry
- Coarse filtration in chemical industry
- Recycled water filtration in paper mill

### Specification:

Material	Temperature	Chemical Resistance	Filtration Accuracy(um)	Structure	Filtration Style	Size
Nylon	<170 °C	Water, Aromatics, Aliphatics, Alkali	25,50,80,100,125,150,175, 200, 250,300,400,600,800,1000, 1250	Monofilament mesh	Surface filtration	01,02,03, 04