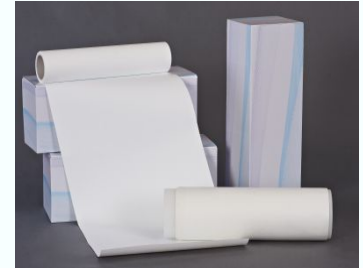


MS[®] PVDF Transfer Membrane

Description

Western blot is an important tool for molecule biology research. Using the advanced chemical technology, MS PVDF transfer membranes with high sensitivity and low background are widely used in the western blot and have been optimized for compatibility with a wide range of protein stains. The high strength and durability and excellent chemical resistance make it a good choice for protein detection.



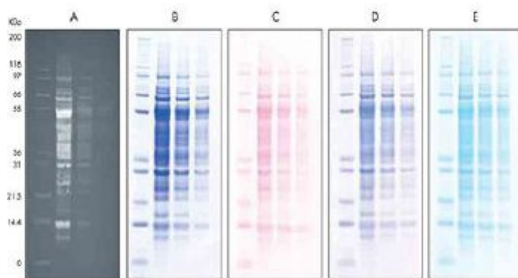
Features

MS[®] PVDF transfer membrane has a series of excellent performance, especially the high protein binding and sensitivity.

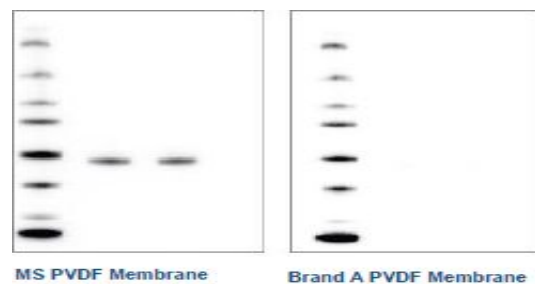
- High protein binding
- High sensitivity
- Low background
- Excellent chemical resistance
- Good heat resistance
- Low extractables
- Good physical performances



High Protein Binding



Good compatibility



High sensitivity

Applications

- Northern, Southern and western blot
- Protein sequence
- Dot blots
- Amino acid analysis
- Solid phase assay system



Our PVDF Transfer micro-porous membrane

Membrane Name	PVDF Transfer	PVDF Transfer
Membrane Material	PVDF	PVDF
Support Material	NO	NO
Structure	Asymmetric	Asymmetric
Pore Size	0.22μm	0.45μm
Protein Binding	>200μg/cm ²	>130μg/cm ²
Alcohol Bubble Point	0.11-0.15Mpa	0.07-0.10Mpa
Thickness	140-170μm	140-170μm

Ordering information

MS	PVDF	022	300	3000
Membrane Material	Pore Size	Width	Length	
PVDF Transfer	022=0.22μm	300=300mm	3000=3000mm	
	045=0.45μm	200=200mm	2000=2000mm	
		250=250mm	1000=1000mm	
	022=0.22μm	270=270mm	3500=3500mm	
	045=0.45μm	280=280mm	4000=4000mm	
		304=304mm	5000=5000mm	

www.membrane-solutions.com

USA
 Phone: 1-214-775-2940
 Address: JP Morgan International Plaza
 Suite 650, 14241 Dallas Parkway,
 Dallas, TX, US

China
 Toll free: 400-620-1660
 Fax: 0086-21-51687551
 Address: 2202, No.1759 North Zhongshan
 Road, Shanghai